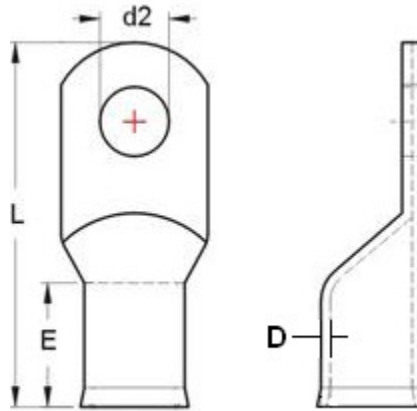


Welding Cable Lug, Copper

The information below lists the required dimensional, chemical and physical characteristics of the products in this purchase order. If the order received does not meet these requirements, it may result in a supplier corrective action request, which could jeopardize your status as an approved vendor. Unless otherwise specified, all referenced consensus standards must be adhered to in their entirety.



Cable Wire Size	L	E	d2	D
	OAL	Clamp Length	Mounting Hole	Material Thickness
	Nom.	Nom.	+/- 0.06	+/- 0.006
4/0	2.32	0.67	.500	0.060
3/0	2.24	0.67	.500	0.051
2/0	2.05	0.73	.500	0.051
1/0	1.85	0.63	.500	0.047
2	1.7	0.63	.500	0.047
2/0	2.05	0.73	.413	0.051
1/0	1.85	0.63	.413	0.047
2	1.7	0.63	.413	0.047
4	1.39	0.39	.413	0.035
6	1.33	0.35	.413	0.039

Dimensions in inches

Specification Requirements:

- Dimensions: Refer to figures above.
- Material: Copper tubing meeting UNS C1100